



Royal Liverpool Philharmonic Orchestra Emerging Musicians Fellowship 2024-25

Application Pack



What is Liverpool Philharmonic?

Liverpool Philharmonic enhances and transforms lives through music.

At the heart of our work is the critically-acclaimed Royal Liverpool Philharmonic Orchestra (the UK's oldest) and Choir; an extensive programme of participatory work with young people and others across our community; and presentation of almost 400 concerts and events each year at our home, Liverpool Philharmonic Hall.

Liverpool Philharmonic reaches more people than any music organisation outside London.

400 live performances each year are enjoyed by over 290,000 people at Liverpool Philharmonic Hall.

20,000 children and young people experience live orchestral music for the first time, each year.

Through In Harmony Liverpool, 1,592 children learn an instrument each week, free of charge in one of the most deprived areas of Liverpool.

The Royal Liverpool Philharmonic Orchestra represents Liverpool at home and abroad, performing to over 100,000 people each year, touring regularly across the UK, Europe and Asia.

Over 18,000 people have benefitted from our Music and Health programme over the last 15 years.

Liverpool Philharmonic is rooted in our city

We are central to Liverpool's cultural offering, being the largest music organisation and one of the largest cultural organisations in the city, employing over 240 people. As well as our work in Liverpool, our Orchestra represent the city with performances and broadcasts across the UK and around the world.

The city's young people are a central focus of our work. Our In Harmony programme provides an intensive, daily music-making programme for over 1,500 children in Everton and Anfield, North Liverpool, and we run more than 5,000 workshops and events in community settings for all ages across the city. The Liverpool Philharmonic Youth Company provides a range of opportunities for music-making for young people, including the Liverpool Philharmonic Youth Orchestra, Liverpool Philharmonic Youth Choir, Children's Choirs, and Rushworth Young Composers programme.

We work in partnership with NHS Trusts, using music to improve the health of people across the Liverpool City region. It is one of the longest continuously running Music and Health programmes working in partnership with the NHS.

Liverpool Philharmonic is committed to diversity and inclusion

We work hard to reach right across our community through our learning work and concert programme, and we are working hard to ensure that our workforce is as diverse as possible.

We attract world class artists to perform at Liverpool Philharmonic Hall and our small venue, Music Room, with a diverse programme of performances ranging from classical, contemporary, rock, pop, folk, roots and jazz, to comedy, film and spoken word. We work with many organisations and cultural partners in the city to ensure that the artists and performances we put on stage, and the audiences we attract, truly represent our community.

What is the Emerging Musicians Fellowship?

A paid, musician development opportunity, offering early-career orchestral musicians an immersive experience of professional orchestral life, on and off the concert platform.

What is the opportunity?

In the 2024-25 season, four Fellowship Musicians will be welcomed into the Royal Liverpool Philharmonic Orchestra, undertaking five patches of work. The structure of the patches includes inductions, rehearsals, performances, training (musical and non-musical) and education work, spread across a season. Fellowship Musicians will rehearse and perform alongside Royal Liverpool Philharmonic Orchestra musicians as part of the orchestral schedule for three intensive weeks.

This paid opportunity will culminate in a final wrap week including an exit audition (to join our regular extras list, or for ongoing development), an intimate chamber performance programmed and performed alongside other Fellowship Musicians, and sessions around ongoing musical and professional development. The wrap week is also an opportunity to welcome the next cohort of Fellowship Musicians to the programme and grow the Alumni network.



Fellowship Musicians will:

- Be partnered with a mentor from their section within the Royal Liverpool Philharmonic Orchestra, paired up according to agreed areas of musical development and interests (musical genre and areas of work off-stage such as chamber/education). Fellowship Musicians will meet regularly with their mentors throughout the season, who will support their growth on and off the platform.
- Receive a minimum of five instrumental lessons with a musician from the Orchestra to develop their skills as an instrumentalist and an orchestral musician.
- Receive a unique tailor-made training programme based on their aims outside of orchestral performance, as well as increasing understanding of how orchestral life works.
- Attend cohort-wide training including:
 - how to do a successful audition
 - how to liaise with Orchestra Managers
 - how to present/improve CVs
 - orchestral etiquette and how orchestra schedule works
 - how to successfully manage a portfolio career
- Have full access to the pioneering Royal Liverpool Philharmonic Orchestra Musicians Performance & Wellbeing Programme, including physiotherapy, sports massage, injury prevention screening, audiology, and performance psychology.
- Be immersed in all the Royal Liverpool Philharmonic Orchestra does, including gaining practical experience within the extensive Learning and Participation programme, and building their knowledge in important areas of the organization, for example the music library, marketing, programming and fundraising departments.
- Become ambassadors of the Fellowship, representing Liverpool Philharmonic at a community, local, and national level during and after their Fellowship.
- Be involved in welcoming the 2025-26 cohort of Fellowship Musicians
- Be encouraged to attend any Royal Liverpool Philharmonic Orchestra concert, with access to free tickets at Liverpool Philharmonic.
- Play an integral role in the ongoing evaluation of the Fellowship through regular meetings with Mentors, Lead Musicians, Head of Learning and other Liverpool Philharmonic staff.



Domingo Hindoyan, Chief Conductor of the Royal Liverpool Philharmonic Orchestra

"I have seen first-hand how vital these fellowships are in supporting emerging musicians who are progressing into professional orchestral life and providing them with invaluable experience."

Méline le Calvez, Clarinet Fellowship Musician 2023-24

"I am looking forward to learning from fantastic and inspiring musicians, in order to develop my playing skills and knowledge of the orchestral repertoire. I am also keen to gain more experience in sharing my passion for music through the diverse educational projects."



Danny Cleave, Double Bass Fellowship Musician 2023-24



"I am extremely excited to be appointed as a Fellowship Musician with the Royal Liverpool Philharmonic Orchestra as it will provide me with an immersive experience in a professional orchestra and give me a big step along the way to the career I hope to build in the coming years. I am also looking forward to spending more time in one of my favourite cities!"

Eligibility Criteria – what are we looking for?

We are recruiting for 4 Fellowship Musicians, limited in 2024-25 to the following instruments:

- **Strings:** Violin, Viola
- **Woodwind:** Flute, Piccolo with Flute, Bassoon, Contrabassoon with Bassoon
- **Brass:** Trumpet, French Horn
- **Percussion & Timpani**

We are looking for Fellowship Musicians who commit to our values:

- Are striving towards **Excellence** in their playing.
- **Ensemble** – are a team player, and able and willing to immerse themselves within Liverpool Philharmonic and all that we do.

- **Welcoming** – will be an ambassador for Liverpool Philharmonic in our communities, within the sector, and to future Fellowship Musicians.
- Must be able to demonstrate a desire for learning, personal development and a **Passion for music**.

The programme is targeted at emerging orchestral musicians who are performing at the standard required to play in a professional orchestra, and *may* include those who are:

- in part- or full-time higher education with commitment to pursue orchestral music performance
- recently out of higher education but not yet established in an orchestral career
- considering a career change/move into orchestral work
- yet to establish an orchestral career

If you have had multiple trials or extensive professional extra work, this may not be the opportunity for you. This will be assessed in your Round 1 Application.

Applicants should be aged 18+ on 19 June 2024. There is no upper age limit.

Applicants must be able to demonstrate the right to work in the UK, and proof of this will be required prior to confirmation of places on the Fellowship.

What is the time commitment?

The cohort of 4 Fellowship Musicians will attend a 2-day induction in Liverpool on **19 - 20 June 2024**. Fellowship Musicians can request to receive an additional travel contribution and will receive contribution towards accommodation. Musicians must be available for these dates to undertake the Fellowship.

- There will then be 3 week-long patches spread between September 2024 and June 2025. These weeks will include a busy schedule of training, rehearsal and performance, so Fellowship Musicians will need to be fully available during these periods.
- We also ask that you make time ahead of the patches to practice your parts in order to get the most from the experience.
- The year will culminate in a 3-day wrap week towards the end of June 2025, which will include the chamber performance.



Dates of the 3 patches and wrap week will be confirmed at the point of offer. Fellowship Musicians will be expected to commit to all dates in order to accept the place.

Positive Action

We acknowledge that our Orchestra and our industry is not fully reflective of the diverse society in which we live. Therefore, at Round 1, we are taking Positive Action to prioritise applications from emerging musicians from backgrounds that are currently underrepresented in UK orchestras.

Applicants will be asked to complete Equal Opportunities information as part of the application form. The information gathered on this form will be used to identify those with protected characteristics that are currently underrepresented in UK orchestras.

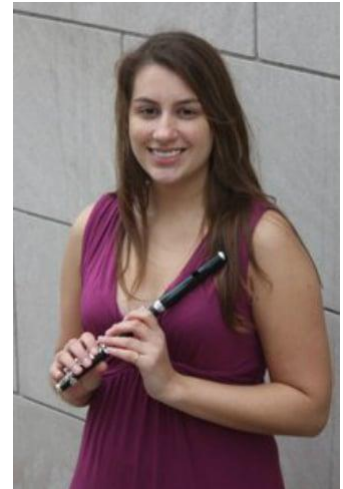
Where applicants declare a protected characteristic (race, gender, socio-economic status, disability, or sexual orientation) **and** meet all the required criteria at Round 1 (including performance and supplementary criteria), these applicants will be guaranteed a live audition in Round 2.

Sameeta Gahir, Principal Piccolo, Royal Liverpool Philharmonic Orchestra and Lead Musician for the Emerging Musicians Fellowship

“We’re proud to be inspiring and encouraging the next generation of orchestral players through our Emerging Musicians Fellowship.

We particularly welcome applications from musicians whose backgrounds are currently underrepresented in professional UK orchestras. Crucially, there is no upper age limit on applicants, so we can attract the widest pool of musicians possible.

The Fellowship has been designed to help those who may struggle for whatever reason to kick-start their orchestral playing career. If you can play to the standard required in a professional orchestra and you’ll be aged 18 or above by 19 June 2024, we would encourage you to apply.”



What is the recruitment process?

Round 1 – Application form and video audition

Candidates can apply in 2 simple steps:

- Record a video of your audition as per the guidelines listed below. Upload videos onto YouTube and share links with us on the application form.
- Complete an online application form. There is the option to do this on video if that is preferred.

All Audition Requirements are available on our website. At Round 1 your audition will include orchestral excerpts and a section or movement from a piece of standard solo repertoire (unaccompanied).

Round 2 - Live auditions

If you are successful in your initial application and audition in Round 1, you will be invited to attend a live audition in Liverpool. Applicants will need to be available between 10am – 4pm on the audition day. Live auditions will include an individual audition plus a group workshop or sectional with musicians from the Royal Liverpool Philharmonic Orchestra. Provisional dates for these are as follows:

- **Monday 25 March 2024 (Strings)**
- **Tuesday 26 March 2024 (Percussion & Timpani)**
- **Wednesday 27 March 2024 (Woodwind)**
- **Thursday 28 March 2024 (Brass)**

We will provide a travel contribution of up to £50 for each candidate attending Round 2 live auditions.

All Audition Requirements are available to download on our website. Round 2 Auditions will include individual excerpts and solo repertoire, as well as excerpts to be played alongside Royal Liverpool Philharmonic Orchestra musicians.

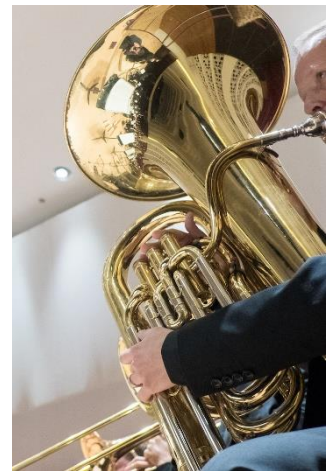
How to apply (Round 1)

Step 1 - Video Audition

Please record a video of your audition in accordance with the Audition Requirements for your chosen instrument. All Audition Requirements are available on our website.

Submission guidelines

- Your video recording must be performed ‘as live’ in one continuous take.
- Your video recording must be unedited.
- Your video recording must be recorded on a mobile phone.
- Repertoire must be performed in the specified order.
- Candidates must not speak during the recording.
- Your video recording should be landscape and you and your instrument should be face on and central to the camera.
- Where possible, recordings should be made **approximately 2-3m** from the recording device.
- The panel will only hear the audio of your submission.
- Your video recording is a private submission and will only be listened to by the panel.



How to upload your digital submission

Please upload your video recording for pre-selection via YouTube. For instructions on how to upload your videos to YouTube, please see the links below:

[\(24\) How to upload videos with YouTube Studio \(Desktop\) - YouTube](#)

[Further information on how to upload videos with YouTube studio](#)

Once you have uploaded your video, please name your video using the following format:

Name - instrument

To ensure your video is not public and cannot be seen by anyone that does not have the link, please select the option 'Unlisted' from the 'Visibility' list.

Please paste the URL link into your application form so the Audition Panel can view your video submission. Videos submitted using any other method will not be considered.

How to upload your digital submission

If you want to apply for more than one instrument combination and be considered separately for each (e.g. a separate application for **Flute** and **Piccolo with Flute**), please submit two completely separate applications and follow the audition requirements for each one. These will be considered as separate applications.

Please do not attach more than one video audition to one application form, as only one will be considered.

Step 2 - Application Form

Please click [here](#) to complete your application form.

In addition to the key information we require, you will be asked the following questions which you may like to consider before starting the application form:

- Please tell us about your orchestral experience to date. This should include whether you have undertaken any professional trials (providing details of where and when, and how many) and/or any professional extra/guest work to date (250 words max). Don't worry if you haven't had much professional orchestral experience to date – this is not required for this opportunity.

- We are accepting entries from early-career orchestral musicians for whom this experience will significantly impact their career. Please tell us why you are applying for this opportunity and why you feel it is right for you at this stage in your career/development. (250 words max)
- Please tell us about any other musical experience or interests that you think would be relevant for us to consider – for example teaching, chamber performance, composition, participation and community work etc. (250 words max)

Applications will close at midday on Thursday 30 November 2023.

Key Information

Fellowship Musicians will receive a fee of £2000, paid in five instalments (after the induction, after each subsequent patch of work, and at the end of the Fellowship).

The Royal Liverpool Philharmonic Orchestra Emerging Musicians Fellowship is not a full-time course nor is it employment, or considered equivalent to employment by Liverpool Philharmonic. Fellowship Musicians will be contracted as freelance musicians, solely for the duration of the patches of work in Liverpool. Fellowship Musicians must be able to demonstrate the right to work in the UK, and proof of this will be required prior to confirmation of places on the Fellowship.

Online Q&A Session on how to apply:

On Wednesday 25 October at 5-6pm, we will be hosting an online Question & Answer session for anybody thinking about applying to the Fellowship. This will be your chance to ask any questions you have about the scheme, or about the application process.

The session is free to join, and you can register your interest using this [link](#).

Timeline

Open for applications	4 October 2023 – midday on 30 November 2023
Shortlisting	December 2023 – January 2024
Invites issued to Round 2	February 2024 (candidates will receive a minimum of 4 weeks' notice of Round 2 audition date/time)
Round 2 Live Auditions	March 2024
Appointment of cohort	April 2024
Induction	June 2024
First patch of work	Autumn 2024